



# E & C Workforce Planning

With Anaplan

## Features

### ✓ Project Summary

Review all ongoing and upcoming projects and track resource readiness.

### ✓ Phase-Level Planning

Plan your high-level phases and add deliverables as the needs arise.

### ✓ Resource Requests

Search the bench to request the right resources based on availability and skills matches.

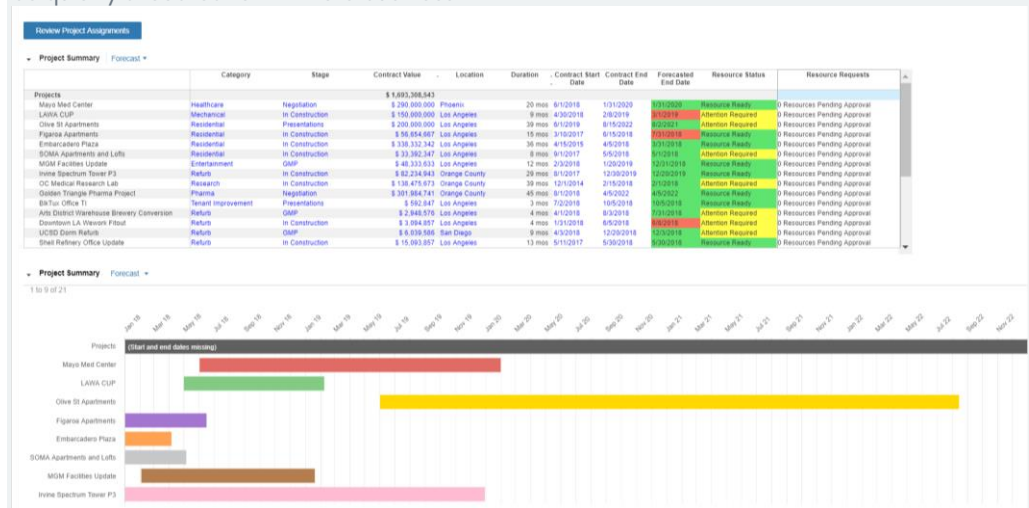
### ✓ PTO Planning

View resource KPIs to proactively schedule downtime for resources before projects are impacted.

Engineering and construction project leaders are tasked with balancing razor-thin margins, complex requirements and increased labor shortages -- making focused workforce planning solutions more necessary every day.

Allitix's E&C Workforce Planning app reduces the jumbled mess of spreadsheets, emails and whiteboards traditionally used in construction workforce planning efforts -- so management can collaborate more efficiently to reduce downtime and maintain profitability.

The Project Executive has a holistic view of all projects' staffing readiness so that resources can be quickly allocated to win more business.



The Project Manager can make in-app resource requests or assignments to navigate PTO and avoid burnout so project handovers can occur closer to budget timelines.

### Project Assignments : Project Manager

1) Select a project from the list  Project Category:  Project Stage:  Resource Requests:

2) Review the information related to your project(s)

Project Deliverables Information	Forecast					
	Start Date	End Date	Work Days / Week	Total Work Days	Total Resource Hrs	Resource Status
Mayo Med Center	6/1/2018	1/31/2020		799 d	3,784	
Pre-Construction	6/1/2018	6/30/2019	4 Days	416 d	1,248	Resource Ready
Construction	4/8/2019	11/29/2019	5 Days	336 d	2,348	Resource Ready
Handover	11/29/2019	1/31/2020	5 Days	47 d	188	Resource Ready

Contract Start Date:  Contract End Date:

3) Review the Roles & Resources currently assigned to your project(s)

Project Resource Information	Forecast					
Resource	Start Date	End Date	Project Utilization	Weekly Project Hours	Total Work Days	Total Resource Hrs
Pre-Construction	6/1/2018	6/30/2019		30 hrs	416 d	1,248 hrs
Estimator	6/1/2018	5/31/2019	25%	10 hrs	208 d	416 hrs
Project Executive	7/1/2018	6/30/2019	50%	20 hrs	208 d	832 hrs

Comments:

4) Review the PTO plan for each project

5) Use the buttons to Add or Delete a resource request  Select Role:

## About Allitix

We are a people-driven consulting firm which prioritizes the goals and vision of our clients but also invests to empower its individuals. Our guided approach enables our clients to deliver immediate project results while providing them the knowledge and skills to maximize and drive future success.

- ✓ We are focused on people.
- ✓ We help you stay one step ahead.
- ✓ We are in this together.

### Request Additional Resources